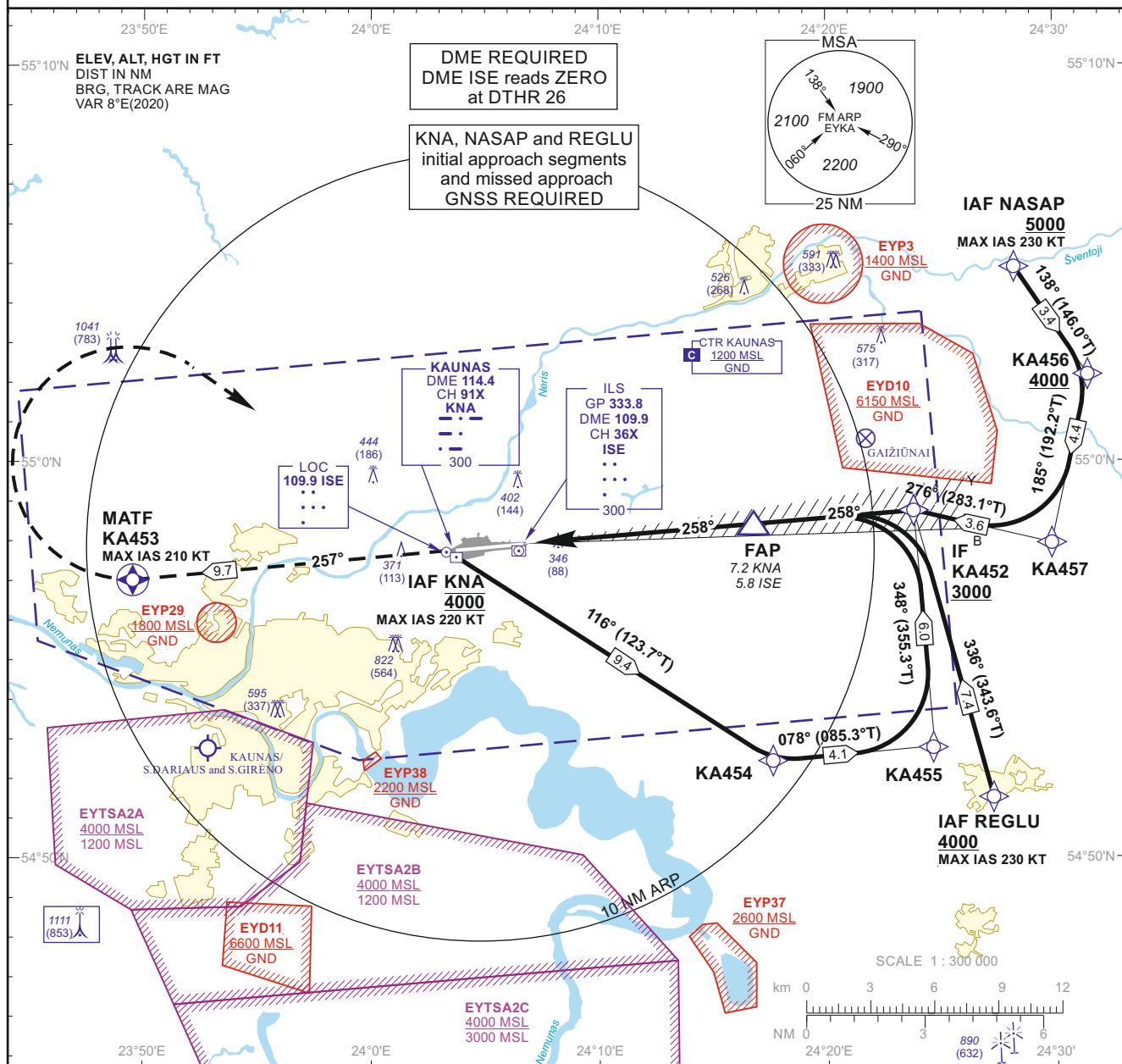


INSTRUMENT
APPROACH
CHART - ICAO

AERODROME ELEV 259

HEIGHTS RELATED TO
DTHR RWY 26 - ELEV 258TWR 124.205
118.505
ATIS 129.055KAUNAS
ILS CAT II Z RWY 26
(CAT A/B/C/D)

MISSED APPROACH

Climb on course 257° to KA453,
then turn right [K210-], direct to IAF KNA
climbing to 4000.

DTHR ELEV 258

NM to/from DTHR RWY 26 7 6 5 4 3 2 1 0 1 2 3 4 5 6 7 8 9 10 11 12
NM to/from DME KNA 0 1 2 3 4 5 6 7 8 9 10 11 12
NM to/from DME ISE 0 1 2 3 4 5 6 7 8 9 10 11 12

NM (0.1 NM) DME ISE						5.8		10.1					
OCA(OCH)		A	B	C	D	DIST DME ISE	5	4	3	2			
STRAIGHT-IN APPROACH	ILS CAT II	408 (150)	425 (167)	436 (178)	451 (193)	Altitude	1890	1580	1260	950			
	ILS CAT I	496 (238)	508 (250)	516 (258)	526 (268)	Height	(1632)	(1322)	(1002)	(692)			
CIRCLING		710 (450)	760 (500)	1230 (970)	not authorized								
						GS	Kts	80	100	120	140	160	180
						FAP-DTHR 5.8 NM	min:sec	4:21	3:29	2:54	2:29	2:11	1:56
						Rate of descent (5.2%)	ft/min	415	520	625	730	835	940
						For data tabulation see verso							

Changes: EYP37 and EYP38 added.

24 FEB 2022

©2019 ORO NAVIGACIJA

AIRAC AMDT 001/2022

INSTRUMENT
APPROACH
CHART - ICAO

AERODROME ELEV 259
HEIGHTS RELATED TO
DTHR RWY 26 - ELEV 258

TWR 124.205
118.505
ATIS 129.055

KAUNAS
ILS CAT II Z RWY 26
(CAT A/B/C/D)

TABULAR DESCRIPTION

IAF KNA, INITIAL APPROACH											
Serial Number	Path Descriptor	Waypoint Identifier	Fly-over	Course/Track °M(°T)	Magnetic Variation	Distance (NM)/ Time	Turn Direction	Altitude (FT)/ Flight level	Speed (KT)	VPA/TCH	Navigation Specification
001	IF	KNA	—	—	-7.5	—	—	@4000	-220	—	RNAV 1
002	TF	KA454	—	116(123.7)	-7.5	9.4	—	—	—	—	RNAV 1
003	TF	KA455	—	078(085.3)	-7.5	4.1	—	—	—	—	RNAV 1
004	TF	KA452	—	348(355.3)	-7.5	6.0	—	+3000	—	—	RNAV 1
IAF NASAP, INITIAL APPROACH											
Serial Number	Path Descriptor	Waypoint Identifier	Fly-over	Course/Track °M(°T)	Magnetic Variation	Distance (NM)/ Time	Turn Direction	Altitude (FT)/ Flight level	Speed (KT)	VPA/TCH	Navigation Specification
001	IF	NASAP	—	—	-7.5	—	—	+5000	-230	—	RNAV 1
002	TF	KA456	—	138(146.0)	-7.5	3.4	—	+4000	—	—	RNAV 1
003	TF	KA457	—	185(192.2)	-7.5	4.4	—	—	—	—	RNAV 1
004	TF	KA452	—	276(283.1)	-7.5	3.6	—	+3000	—	—	RNAV 1
IAF REGLU, INITIAL APPROACH											
Serial Number	Path Descriptor	Waypoint Identifier	Fly-over	Course/Track °M(°T)	Magnetic Variation	Distance (NM)/ Time	Turn Direction	Altitude (FT)/ Flight level	Speed (KT)	VPA/TCH	Navigation Specification
001	IF	REGLU	—	—	-7.5	—	—	+4000	-230	—	RNAV 1
002	TF	KA452	—	336(343.6)	-7.5	7.4	—	+3000	—	—	RNAV 1
MISSED APPROACH											
001	—	RW26	—	—	-7.5	—	—	—	—	—	RNAV 1
002	CF	KA453	Y	257(264.87)	-7.5	9.7	—	—	-210	—	RNAV 1
003	DF	KNA	—	—	-7.5	—	R	@4000	-220	—	RNAV 1

FIX/POINTS	COORDINATES	FIX FORMATION
NASAP (IAF)	55 04 57.2N 024 28 10.6E	
REGLU (IAF)	54 51 37.2N 024 27 23.7E	
KNA (IAF)	54 57 37.4N 024 03 59.1E	
KA454	54 52 26.0N 024 17 33.7E	
KA455	54 52 46.2N 024 24 37.3E	
KA456	55 02 09.7N 024 31 27.3E	
KA457	54 57 55.1N 024 29 51.4E	
KA452 (IF)	54 58 44.2N 024 23 46.4E	11.46 NM KNA ; BRG 257.53° / 10.09 NM ISE
FAP	54 58 23.3N 024 16 25.6E	7.21 NM KNA ; BRG 257.53° / 5.84 NM ISE
RW26 (DTHR)	54 57 53.79N 024 06 19.46E	
KA453 (MATF)	54 57 03.0N 023 49 33.4E	
DME ISE	54 57 49.0N 024 06 00.1E	
LOC ISE	54 57 44.97N 024 03 21.54E	

Changes: new chart.